

# PRODUCT PROGRAMME

Product catalog for  
robots of the brand

**SE Cutter\***

## PRODUCT PROGRAMME 2025

---

## TABLE OF CONTENTS


Robot type	Page
SE Cutter* DN 70-150*	3



The tables of contents in this catalog are interactive. A click will lead you directly to the desired target page.



**N•TEC II®**



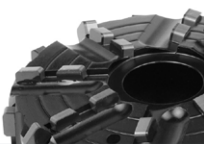
Field-Proven Standard Diamond Tools with Outstanding Value for Purchase Investment

**Materials to be processed**

- Reinforced Concrete
- Concrete
- Deposits / Fouling
- Cast Iron
- Vitrified Clay

Page 5

**BLACK•LINE**




High-Tech Milling Tools made of PCD with Unbeatable Cutting and Stock Removal Performance for Almost Every Material

**Materials to be processed**

- UV CIPP
- Roots
- PVC
- Felt CIPP

Page 7

**linerCUT Pro®**




Absolutely Smooth-Running and Precise PCD Cutting Tools for Opening CIPP - Optimized for UV CIPP -

**Materials to be processed**

- UV CIPP
- PVC
- Felt CIPP

Page 14

**linerCUT Pro® 2.0**




Absolutely Smooth-Running and Precise PCD Cutting Tools for Opening CIPP - All Kinds of CIPP and PVC -

**Materials to be processed**

- UV CIPP
- PVC
- Felt CIPP

Page 15

**D•GRIT**



Milling Tools with Diamond Granules for Opening CIPP - Optimal for UV CIPP and Lined Cast Iron Pipes -

**Materials to be processed**

- UV CIPP
- PVC
- Felt CIPP

Page 16

**HM•LINE**




Cost-Efficient Milling Tools with Carbide Granulate Tipping for Opening and Reworking CIPP

**Materials to be processed**

- UV CIPP
- Roots
- PVC
- Felt CIPP

Page 18

**VHM•LINE**

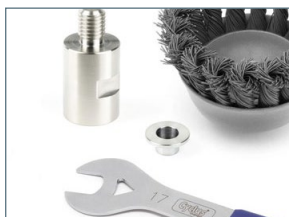


Special Milling Tools for Processing Steel and Cast Iron

**Materials to be processed**

- Cast Iron
- Steel

Page 21



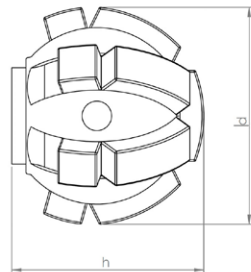
### Functional Accessories

High-quality brushes, adapters, extensions, etc.

Page 22



**N•TEC II®** Ball milling cutter



**Materials to be processed**

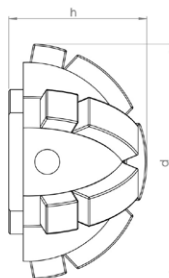
- Reinforced Concrete
- Concrete
- Deposits / Fouling
- Cast Iron
- Vitrified Clay

**Field of Application**

- Preparatory milling of laterals
- Removal of intruding laterals
- Removal of intruding obstacles

Article-No.	d mm	h mm	Segments	Weight kg
20021 3/8"UNF	40	37	13	0.2

**N•TEC II®** Half-ball milling cutter



**Materials to be processed**

- Reinforced Concrete
- Concrete
- Deposits / Fouling
- Cast Iron
- Vitrified Clay

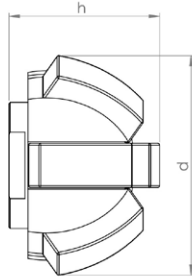
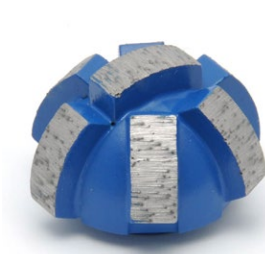
**Field of Application**

- Preparatory milling of laterals
- Removal of intruding laterals
- Frontal milling
- Removal of intruding obstacles

Article-No.	d mm	h mm	Segments	Weight kg
20034 3/8"UNF	50	29	13	0.15



**N•TEC II** Half-ball milling cutter



**Materials to be processed**

- Reinforced Concrete
- Concrete
- Deposits / Fouling
- Cast Iron
- Vitrified Clay

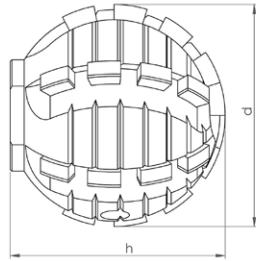
**Field of Application**

- Preparatory milling of laterals
- Removal of intruding laterals
- Frontal milling
- Removal of intruding obstacles

Article-No.	d mm	h mm	Segments	Weight kg
20035 3/8"UNF	36	25	7	0.1



**BLACK-LINE** Ball milling cutter



**Materials to be processed**

- UV CIPP
- Roots
- PVC
- Felt CIPP

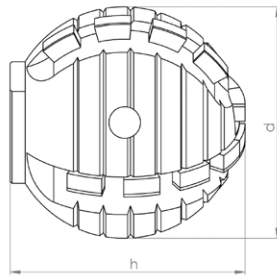
**Note: Only suitable for processing CIPP liners and PVC and for cutting roots!**

**Field of Application**

- Opening of laterals and inlet lines
- Removal of intruding obstacles

Article-No.	d mm	h mm	Segments	Weight kg
BL 11446 3/8"UNF	40	42	26	0.25

**BLACK-LINE** Ball milling cutter



**Materials to be processed**

- UV CIPP
- Roots
- PVC
- Felt CIPP

**Note: Only suitable for processing CIPP liners and PVC and for cutting roots!**

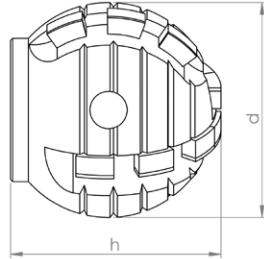
**Field of Application**

- Opening of laterals and inlet lines
- Removal of intruding obstacles

Article-No.	d mm	h mm	Segments	Weight kg
BL 11414 3/8"UNF	40	42	18	0.25



**BLACK-LINE** Ball milling cutter



**Materials to be processed**

- UV CIPP
- PVC
- Roots
- Felt CIPP

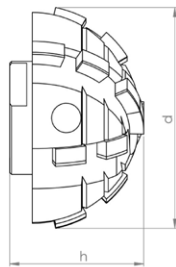
**Note: Use on steel-reinforced concrete will destroy the cutting elements!**

**Field of Application**

- Opening of laterals and inlet lines
- Removal of intruding obstacles

Article-No.	d mm	h mm	Segments	Weight kg
BL 11408 3/8"UNF	30	32	14	0.1

**BLACK-LINE** Half-ball milling cutter



**Materials to be processed**

- UV CIPP
- PVC
- Roots
- Felt CIPP

**Note: Use on steel-reinforced concrete will destroy the cutting elements!**

**Field of Application**

- Opening of laterals and inlet lines
- Removal of intruding obstacles

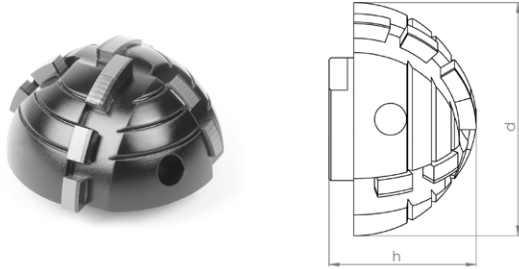
Article-No.	d mm	h mm	Segments	Weight kg
BL 11465 3/8"UNF	40	25	16	0.15



**SE Cutter\*** DN 70-150\*



**BLACK-LINE** Half-ball milling cutter



**Materials to be processed**

- UV CIPP
- PVC
- Roots
- Felt CIPP

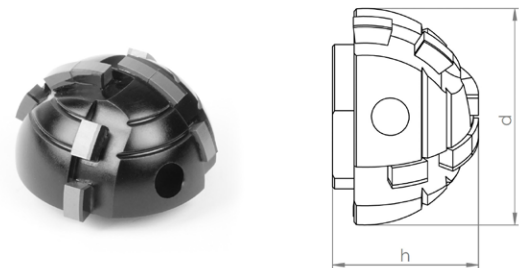
**Note: Use on steel-reinforced concrete will destroy the cutting elements!**

**Field of Application**

- Opening of laterals and inlet lines
- Removal of intruding obstacles

Article-No.	d mm	h mm	Segments	Weight kg
BL 11428 3/8"UNF	40	25	12	0.07

**BLACK-LINE** Half-ball milling cutter



**Materials to be processed**

- UV CIPP
- PVC
- Roots
- Felt CIPP

**Note: Use on steel-reinforced concrete will destroy the cutting elements!**

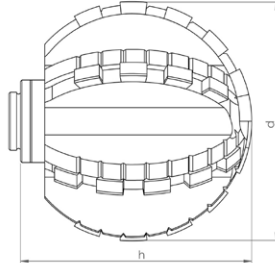
**Field of Application**

- Opening of laterals and inlet lines
- Removal of intruding obstacles

Article-No.	d mm	h mm	Segments	Weight kg
BL 11429 3/8"UNF	30	20	8	0.06



**BLACK-LINE** Ball milling cutter Type ProView®



**Materials to be processed**

- UV CIPP
- Roots
- PVC
- Felt CIPP

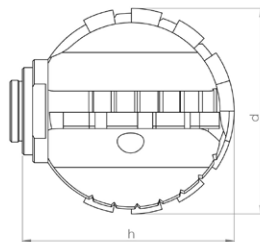
**Note: Only suitable for processing CIPP liners and PVC and for cutting roots!**

**Field of Application**

- Opening of laterals and inlet lines
- Removal of intruding obstacles

Article-No.	d mm	h mm	Segments	Weight kg
BL 11108 3/8"UNF	50	46	30	0.15

**BLACK-LINE** Ball milling cutter Type ProView®



**Materials to be processed**

- UV CIPP
- Roots
- PVC
- Felt CIPP

**Note: Only suitable for processing CIPP liners and PVC and for cutting roots!**

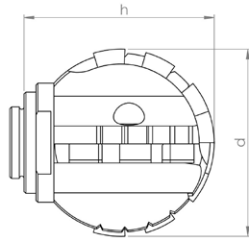
**Field of Application**

- Opening of laterals and inlet lines
- Removal of intruding obstacles

Article-No.	d mm	h mm	Segments	Weight kg
BL 11103 3/8"UNF	40	38	18	0.15



**BLACK-LINE** Ball milling cutter Type ProView®



**Materials to be processed**

- UV CIPP
- Roots
- PVC
- Felt CIPP

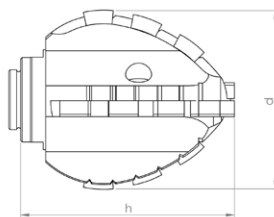
**Note: Only suitable for processing CIPP liners and PVC and for cutting roots!**

**Field of Application**

- Opening of laterals and inlet lines
- Removal of intruding obstacles

Article-No.	d mm	h mm	Segments	Weight kg
BL 11101 3/8"UNF	32	30	14	0.06

**BLACK-LINE** Double-cone milling cutter Type ProView®



**Materials to be processed**

- UV CIPP
- Roots
- PVC
- Felt CIPP

**Note: Only suitable for processing CIPP liners and PVC and for cutting roots!**

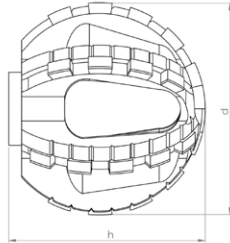
**Field of Application**

- Opening of laterals and inlet lines

Article-No.	d mm	h mm	Segments	Weight kg
BL 11107 3/8"UNF	36	41	16	0.1



**BLACK-LINE** Ball milling cutter Type ProView®



**Materials to be processed**

- UV CIPP
- Roots
- PVC
- Felt CIPP

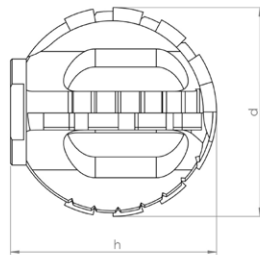
**Note: Only suitable for processing CIPP liners and PVC and for cutting roots!**

**Field of Application**

- Opening of laterals and inlet lines
- Removal of intruding obstacles

Article-No.	d mm	h mm	Segments	Weight kg
BL 11114 3/8"UNF	50	46	30	0.15

**BLACK-LINE** Ball milling cutter Type ProView®



**Materials to be processed**

- UV CIPP
- Roots
- PVC
- Felt CIPP

**Note: Only suitable for processing CIPP liners and PVC and for cutting roots!**

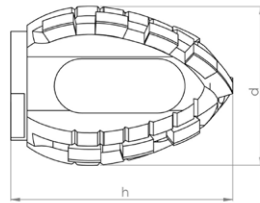
**Field of Application**

- Opening of laterals and inlet lines
- Removal of intruding obstacles

Article-No.	d mm	h mm	Segments	Weight kg
BL 11110 3/8"UNF	40	38	18	0.15



**BLACK-LINE** Double-cone milling cutter Type ProView®



**Materials to be processed**

- UV CIPP
- Roots
- PVC
- Felt CIPP

**Note: Only suitable for processing CIPP liners and PVC and for cutting roots!**

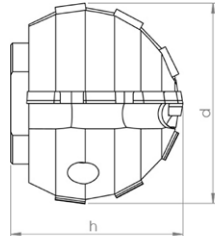
**Field of Application**

- Opening of laterals and inlet lines

Article-No.	d mm	h mm	Segments	Weight kg
BL 11112 3/8"UNF	36	41	16	0.1



## linerCUT Pro® Ball milling cutter



### Materials to be processed

- UV CIPP
- Felt CIPP
- PVC

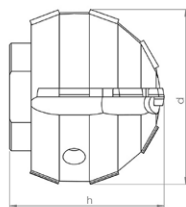
**Note: Only suitable for processing CIPP liners and PVC!**

### Field of Application

- Opening of laterals and inlet lines

Article-No.	d mm	h mm	Segments	Weight kg
BL 11443 3/8"UNF	40	36	12	0.2

## linerCUT Pro® Ball milling cutter



### Materials to be processed

- UV CIPP
- Felt CIPP
- PVC

**Note: Only suitable for processing CIPP liners and PVC!**

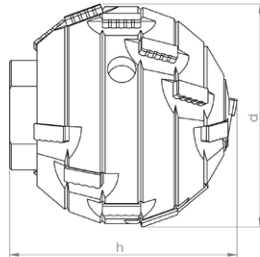
### Field of Application

- Opening of laterals and inlet lines

Article-No.	d mm	h mm	Segments	Weight kg
BL 11442 3/8"UNF	30	29	14	0.1



**linerCUT Pro<sup>2.0</sup> Ball milling cutter**



**Materials to be processed**

- UV CIPP
- Felt CIPP
- PVC

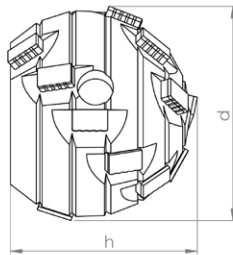
**Note: Only suitable for processing CIPP liners and PVC!**

**Field of Application**

- Opening of laterals and inlet lines

Article-No.	d mm	h mm	Segments	Weight kg
BL 11448 3/8"UNF	40	40	18	0.25

**linerCUT Pro<sup>2.0</sup> Ball milling cutter**



**Materials to be processed**

- UV CIPP
- Felt CIPP
- PVC

**Note: Only suitable for processing CIPP liners and PVC!**

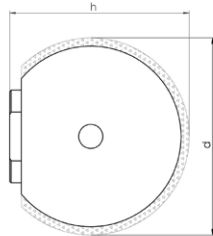
**Field of Application**

- Opening of laterals and inlet lines

Article-No.	d mm	h mm	Segments	Weight kg
BL 11447 3/8"UNF	30	25	16	0.1



**D•GRIT** Ball milling cutter



**Materials to be processed**

- UV CIPP
- Felt CIPP
- PVC

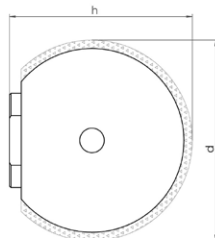
**Note: Only suitable for processing CIPP liners and PVC!**

**Field of Application**

- Opening of laterals and inlet lines
- CIPP liner finishing

Article-No.	d mm	h mm	Grit	Weight kg
70001 3/8"UNF	40	38	Diamond	0.25

**D•GRIT** Ball milling cutter



**Materials to be processed**

- UV CIPP
- Felt CIPP
- PVC

**Note: Only suitable for processing CIPP liners and PVC!**

**Field of Application**

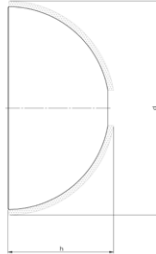
- Opening of laterals and inlet lines
- CIPP liner finishing

Article-No.	d mm	h mm	Grit	Weight kg
70003 3/8"UNF	30	30	Diamond	0.15





**D•GRIT** Half-ball milling cutter



**Materials to be processed**

- UV CIPP
- Felt CIPP
- PVC

**Note: Only suitable for processing CIPP liners and PVC!**

**Field of Application**

- Opening of laterals and inlet lines
- CIPP liner finishing

Article-No.	d mm	h mm	Grit	Weight kg
70008 3/8"UNF	50	25	Diamond	0.1

**D•GRIT** Half-ball milling cutter



**Materials to be processed**

- UV CIPP
- Felt CIPP
- PVC

**Note: Only suitable for processing CIPP liners and PVC!**

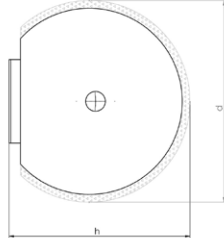
**Field of Application**

- Opening of laterals and inlet lines
- CIPP liner finishing

Article-No.	d mm	h mm	Grit	Weight kg
70009 3/8"UNF	40	20	Diamond	0.06



**HM•LINE** Ball milling cutter



**Materials to be processed**

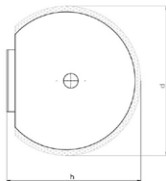
- UV CIPP
- Roots
- PVC
- Felt CIPP

**Field of Application**

- Opening of laterals and inlet lines
- Removal of intruding obstacles
- CIPP liner finishing

Article-No.	d mm	h mm	Grit	Weight kg
50002 3/8"UNF	40	42	Carbide	0.3

**HM•LINE** Ball milling cutter



**Materials to be processed**

- UV CIPP
- Roots
- PVC
- Felt CIPP

**Field of Application**

- Opening of laterals and inlet lines
- Removal of intruding obstacles
- CIPP liner finishing

Article-No.	d mm	h mm	Grit	Weight kg
50005 3/8"UNF	30	32	Carbide	0.15



**HM•LINE** Half-ball milling cutter



**Materials to be processed**

- UV CIPP
- Roots
- PVC
- Felt CIPP

**Field of Application**

- Opening of laterals and inlet lines
- Removal of intruding obstacles
- CIPP liner finishing

Article-No.	d mm	h mm	Grit	Weight kg
50004 3/8"UNF	40	30	Carbide	0.15

**HM•LINE** Half-ball milling cutter



**Materials to be processed**

- UV CIPP
- Roots
- PVC
- Felt CIPP

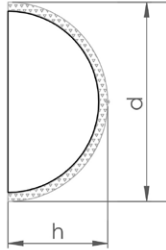
**Field of Application**

- Opening of laterals and inlet lines
- Removal of intruding obstacles
- CIPP liner finishing

Article-No.	d mm	h mm	Weight kg
50009 3/8"UNF	30	20	0.09



**HM•LINE** Half-ball milling cutter



**Materials to be processed**

- UV CIPP
- PVC
- Roots
- Felt CIPP

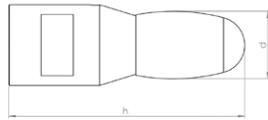
**Field of Application**

- Opening of laterals and inlet lines
- Removal of intruding obstacles
- CIPP liner finishing

Article-No.	d mm	h mm	Grit	Weight kg
51001 3/8"UNF	50	25	Carbide	0.1



## VHM•LINE oval shaped



### Materials to be processed

- Cast Iron
- Steel

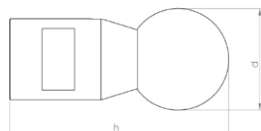
**Note: Use on concrete or vitrified clay will destroy the cutting elements!**

### Field of Application

- Removal of intruding obstacles

Article-No.	d mm	h mm	Segments	Weight kg
60001 3/8"UNF	16	55	1	0.15

## VHM•LINE ball shaped



### Materials to be processed

- Cast Iron
- Steel

**Note: Use on concrete or vitrified clay will destroy the cutting elements!**

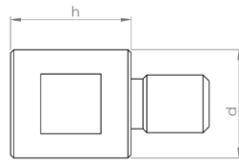
### Field of Application

- Removal of intruding obstacles

Article-No.	d mm	h mm	Segments	Weight kg
60002 3/8"UNF	25	56	1	0.15

## SE Cutter\* DN 70-150\*

### Extension 20 mm



#### Description

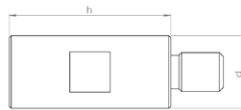
CNC fabricated tool extension for increased working radius of robot arm.

#### Specification

Stainless steel

Article-No.	d mm	h mm	Weight kg
90138 3/8"UNF	18	20	0.05

### Extension 40 mm



#### Description

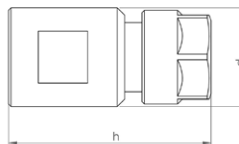
CNC fabricated tool extension for increased working radius of robot arm.

#### Specification

Stainless steel

Article-No.	d mm	h mm	Weight kg
90139 3/8"UNF	18	40	0.07

### Adapter for mounting commercially available shank tools Ø 6 mm



#### Description

CNC fabricated collet chuck adapter for mounting commercially available shank tools.

e.g. burrs, brushes, flap grinders etc...

Mounting: Shank Ø 6-6,5 mm

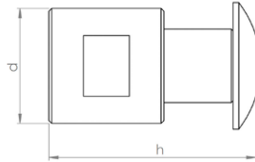
#### Specification

Stainless steel

Article-No.	d mm	h mm	Weight kg
90172 3/8"UNF	20	40	0.07



**Adapter for mounting of 2 wheel brushes**



**Description**

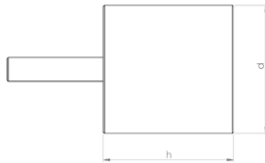
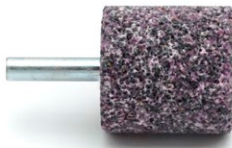
CNC fabricated adapter for mounting of 2 wheel brushes.  
Mounting shaft  $\varnothing$  12,7 mm  
includes locking screw and cupped washer  
**NOTE:** This adapter cannot be used to mount a single brush!

**Specification**

Stainless steel

Article-No.	d mm	h mm	Weight kg
90140 3/8"UNF	20	32	0.05

**Mounted point-cylindrical**



**Description**

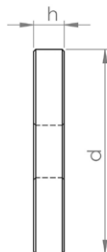
Corundum mounted point, for working on steel and cast iron.  
**NOTE:** Only useable with adapter!

**Specification**

Corundum

Article-No.	d mm	h mm	Weight kg
81002	32	32	0.08

**Wheel brush  $\varnothing$  45 mm**



**Description**

Premium rotary wire brushes for finishing work on CIPP liners and PVC.  
Mounting hole  $\varnothing$  12,7 mm  
**NOTE:** May be used only with matching adapter! Packing unit: 2 pieces

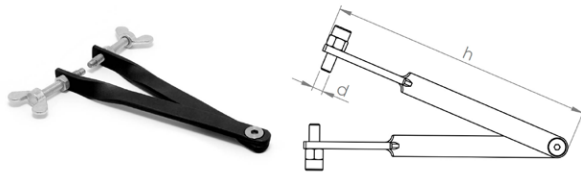
**Specification**

Wire thickness:  $\varnothing$  0,3 mm

Article-No.	d mm	h mm	Weight kg
80025	45	8	0.05



## Pin-tipped tongs for safe tool changeover



### Description

The tongs are fitted with pin (with adjustable gripping depth) which are inserted into the gripping holes of the milling tools, permitting safe changeover without risking damage to the tooling.

### Specification

Steel

Article-No.	d mm	h mm	Weight kg
92002	5	150	0.125

## Open-end wrench 17 mm



### Description

The flat design of the wrench is particularly well suited for milling tools with low base height.

### Specification

Steel

Article-No.	d mm	h mm	Weight kg
92001 SW17	17	2	0.08